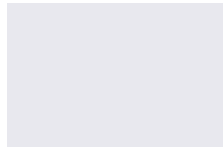
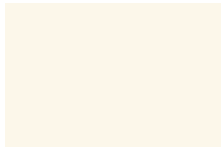


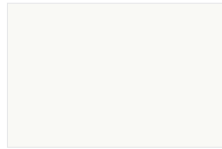
# High Performance Metal Roofing Finishes



Stone White  
SR.66/TE.87



Bone White  
SR.67/TE.87



Regal White  
SR.70/TE.87



Sandstone  
SR.54/TE.87



Bright Silver  
SR.54/TE.87



Colonial Red  
SR.26/TE.87



Aged Copper  
SR.41/TE.87



Burgundy  
SR.28/TE.87



Pacific Blue  
SR.26/TE.87



Pre-weathered Galvalume®  
SR.27/TE.87



Slate Blue  
SR.35/TE.87



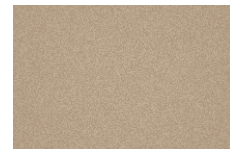
Teal Blue  
SR.28/TE.87



Patina Green  
SR.32/TE.87



Everglade Moss  
SR.29/TE.87



Champagne  
SR.41/TE.87



Forest Green  
SR.28/TE.87



Island Blue  
SR.35/TE.87



Hartford Green  
SR.25/TE.87



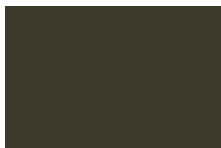
Charcoal Gray  
SR.25/TE.87



Metallic Copper  
SR.37/TE.87



Dove Gray  
SR.38/TE.87



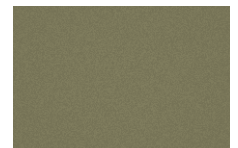
Dark Bronze  
SR.26/TE.87



Surrey Beige  
SR.47/TE.87



Sierra Tan  
SR.37/TE.87



Antique Patina  
SR.27/TE.87



Medium Bronze  
SR.32/TE.87



Mansard Brown  
SR.27/TE.87



Matte Black  
SR.26/TE.87



Terra Cotta  
SR.40/TE.87



Brilliance Red  
SR.38/TE.87



Deep Blue Sea  
SR.26/TE.87



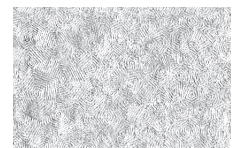
Hemlock  
SR.34/TE.87



Slate Gray  
SR.41/TE.87



Buckskin  
SR.25/TE.87



Drexlume™  
SR.68/TE.10

PREMIUM

MILL FINISH

\*Available with 20-year Non-Prorated Limited Warranty  
Colors meet the Eligible Building Envelope Component Criteria for tax credits.

To Order Call Toll Free: (888).321.9630

# High Performance Metal Roofing Finishes

FOR GALVALUME®, ALUMINUM COILS AND SHEETS

COLOR <small>35 Year Warranty</small>	24 ga x 20'	24 ga x 24'	24 ga x 4' x 10'	26 ga x 24'	SRI*
Aged Copper	X	X	X		46
Antique Patina	X	X	X		28
Bone White	X	X	X		81
Bright Silver	X	X	X		64
Brilliance (20-Year Warranty)	X	X	X	X	44
Buckskin	X	X	X		25
Burgundy	X	X	X	X	29
Champagne	X	X	X		46
Charcoal Gray	X	X	X	X	25
Colonial Red	X	X	X	X	27
Dark Bronze	X	X	X	X	27
Deep Blue Sea	X	X	X		27
Dove Gray	X	X	X	X	42
Everglade Moss	X	X	X		30
Forest Green	X	X	X	X	29
Hartford Green	X	X	X	X	25
Hemlock	X	X	X		37
Island Blue	X	X	X		38
Mansard Brown	X	X	X	X	28
Matte Black	X	X	X	X	27
Medium Bronze	X	X	X	X	34
Metallic Copper	X	X	X		41
Pacific Blue	X	X	X		25
Patina Green	X	X	X		34
Pre-Weathered Galvalume	X	X	X		28
Regal White	X	X	X		85
Sandstone	X	X	X		64
Sierra Tan	X	X	X		41
Slate Blue	X	X	X	X	38
Slate Gray	X	X	X	X	46
Stone White	X	X	X		66
Surrey Beige	X	X	X		46
Teal Blue	X	X	X		29
Terra Cotta	X	X	X		46

\*Solar Reflectance Index (SRI)

KYNAR ALUMINUM	.032 x 20'	.032 x 4' x 10'	.040 x 4' x 10'	.050 x 4' x 10'
Bone White		X	X	
Bright Silver	X	X		
Burgundy	X	X		
Charcoal Gray	X	X	X	
Colonial Red	X	X		
Dark Bronze	X	X	X	X
Dove Gray	X	X		
Forest Green	X	X	X	
Hartford Green	X	X	X	
Mansard Brown		X	X	
Matte Black		X	X	
Medium Bronze	X	X	X	X
Metallic Copper	X	X	X	
Regal White	X	X	X	X
Sandstone		X	X	
Slate Gray	X	X	X	
Terra Cotta	X	X	X	

## Substrates

High performance metal roofing products are available in Galvalume® and Aluminum. All metal products are tension leveled for superior flatness.

## Warranty

- 35 Year Non Pro-rated PVDF Paint Warranty with a 20 year Galvalume® Substrate Warranty
- 35 Year Non Pro-rated PVDF Paint and 25 year Aluminum Substrate Warranty
- 20 Year Non Pro-rated International PVDF Paint Warranty
- 25 Year Non Pro-rated Drexlume™ (Acrylic Coated Galvalume®) Warranty

## Trinar® (Fluoropolymer)

Drexel Metals standard colors are produced by Akzo Nobel and contain a minimum of 70% PVDF base resin with ceramic pigments. All colors are formulated to ensure consistent appearance and quality. The Trinar system is applied over Akzo Nobel polyester primer in a minimum thickness of 0.2 mil and can be applied to either Galvalume® HD Galvanized or Aluminum substrates. All topcoats are a minimum of 0.8 mil of the Trinar® color choice. The reverse side is primer and a washcoat of 0.5 mil total dry film thickness.



## Drexlume™

Drexel Metals offers a mill finished Galvalume® with a two-sided, clear acrylic finish that simultaneously aids roll forming without the use of lubricants and eliminates unsightly handprints or stains resulting from handling and storage. The acrylic finish dissolves naturally over a period of time, and when left as is, allows for natural and even weathering.

## Drexel Metals Inc. Distribution Facilities:

### Drexel Metals Inc.

204 Railroad Drive  
Ivyland, PA 18974  
Toll Free: (888) 321-9630  
Fax: (877) 321-9638

### Drexel Metals Inc.

13450 E. Smith Road,  
Unit #900  
Aurora, CO 80011  
Toll Free: (866) 207-7663  
Fax: (303) 340-0982

### Drexel Metals Inc.

1234 Gardiner Lane,  
Louisville, KY 40213  
Toll Free: (888) 321-9630  
Fax: (877) 321-9638

### Drexel Metals Inc.

401 FAC Industrial Park,  
14th St.  
Ambridge, PA 15003  
Toll Free: (888) 321-9630  
Fax: (877) 321-9638

### Drexel Metals Inc.

3360 Scherer Drive N.  
Suite A  
St. Petersburg, FL 33716  
Phone: (877) 399-3600  
Fax: (727) 572-7910

Colors shown represent the actual color as closely as possible. To ensure exact color for final approval, a metal color chip is available. Warranty statements mentioned are outlines; complete Limited Warranty information is available on request. No other warranty expressed or implied is applicable.

Please go to [www.drexelmetals.com](http://www.drexelmetals.com) to find pertinent information regarding our products, corporate disclosures and disclaimers.

Toll Free: (888) 321-9630 | [www.drexelmetals.com](http://www.drexelmetals.com)